

TriMet's Digital Land Mobile Radio (LMR) System

Managed Service Contract

June 26th, 2024

Land Mobile Radio Critical Functions

- Coverage throughout TriMet service area including Robertson Tunnel.
- Voice communications for vehicles, staff, and Operations and Security Command Centers.
- Emergency alarm capability
- Resilient and redundant for emergency reliability
- Interoperable with other regional governmental radio systems

Mobile Radios



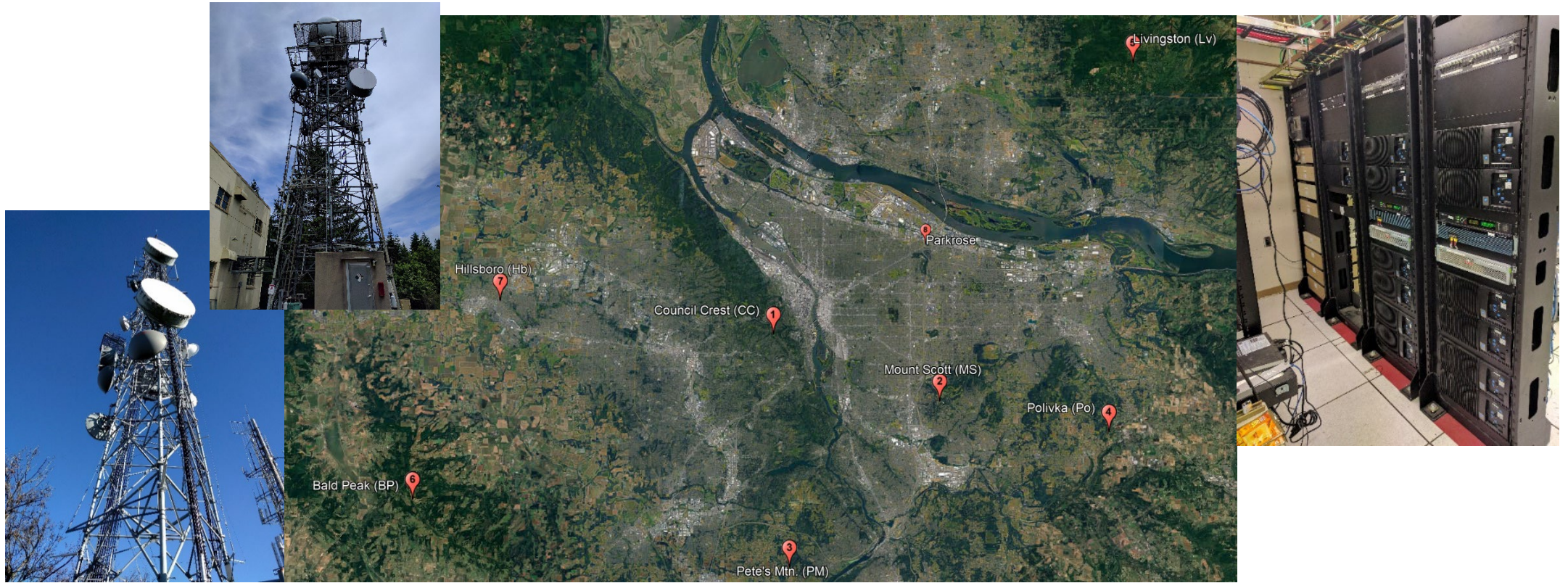
- **In vehicles:** Lght rail vehicles, fixed route buses, LIFT vehicles, non-revenue vehicles
- **Command centers:** Operations control, dispatch, Security Operations Center
- Workstations, signal rooms, break rooms
- **GPS position** available when installed with GPS antenna

Portable Radios



- **Operations and Maintenance:** Rail Operators, Maintenance of Way, Rail Equipment Maintenance, etc.
- **Security, Safety, Supervisors, etc.**
- **GPS position built in**

Resilient full-system coverage



Tait Managed Services

- 24 x 7 monitoring of the radio network
- Immediate response and remote resolution of issues when possible
- Immediate notification
- Local engineering support
- Management reporting (capacity and quality)
- Secure access to software updates